

1.5-5.0 ton IC FORKLIFT TRUCKS

The Stärke Material Handling Group is committed to providing the toughest trucks for even the most challenging applications. Our vehicles are environmentally friendly with less emissions and the lowest fuel consumption.

Stärke is German for 'strong'. It perfectly describes how we perform in design, customer service, value, commitment to safety and to our products themselves... each is built for years of trouble-free service.



The Stärke Professional from the Stärke Materials Handling Group



Stärke Material Handling Group
Tel: 905.227.7554
Fax: 905.227.2072
www.StarkeForklift.com
email: info@starkeforklift.com





FITS ALL YOUR NEEDS

Durable. Safe. Optimal visibility. Great value.

Stärke is German for 'strong' and it perfectly describes how we perform in design, customer service and value. It also describes our commitment to worker safety and to our products themselves... each is built for years of trouble-free service.

The Stärke Professional is no exception. We designed it to deliver tremendous value, without cutting corners, to deliver a rock-solid forklift. Read on to find out how our innovative design gives you high-end features without the high-end price, and how we built the Professional to give you one of the safest, most efficient forklifts on the market. All Stärke forklifts have CE certification, are ISO 9001 certified and meet or exceed ANSI/ASME B56.1 standards.

The Stärke Professional offers unparalleled productivity, superior ergonomics and never before seen durability backed by the best warranty in the industry. Stärke Professional is ready for the most challenging applications.

FEATURES & BENEFITS

EASY OPERATION • STABLE • DURABLE • PRODUCTIVE • ERGONOMIC • OPTIMAL VISIBILITY • EASILY MAINTAINED WITH LOW COST OF OWNERSHIP



EASY OPERATION

The operator's cab has been designed to maximize outward visibility by keeping all the controls compact and close at hand. Better control and visibility means a safer, more efficient operation.



Steering wheel with assist knob

The steering wheel improves vehicle manoeuvrability while simplifying operator entry and exit to the cab.



Electronic F/R control lever

The forward/reverse lever gives fingertip control of the solenoid controlled transmission. Fast, easy direction changes means more efficient operation.



Light control lever

This controls both the headlights and turn signals.



Parking brake lever with interlock

To improve safety, the parking brake can only be released by first depressing the top button.

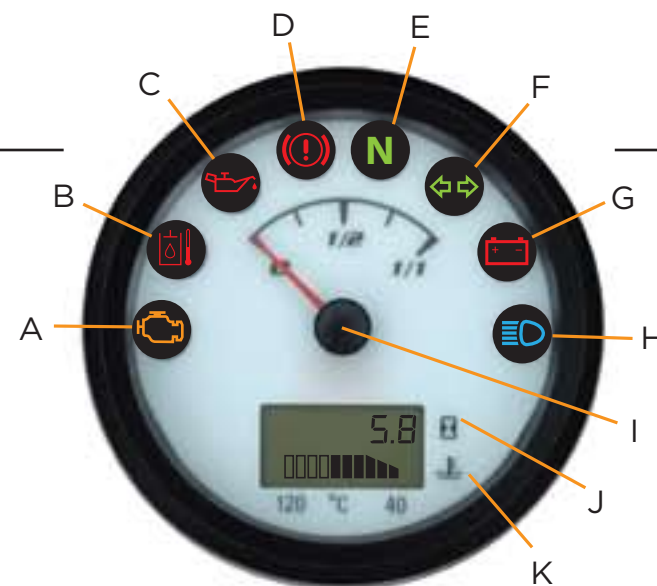


Easy entry and exit

A low step height and secure, non-slip surface allow safe operator entry and exit.

New multifunction Cobo instrument panel

A compact and easily readable multifunction display is centrally located for optimum visibility. It provides all critical information for the operator to safely operate and maintain the vehicle.



- | | |
|--------------------------------|----------------------------------|
| A Engine warning | G Low battery warning |
| B Hydraulic temperature | H Headlights |
| C oil pressure warning | I Fuel gauge |
| D Park brake warning | J Hour meter |
| E Neutral gear | K Water temperature gauge |
| F Turn signals | |



Tilting steering column

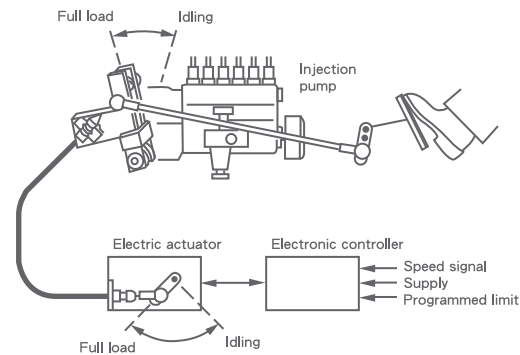
The steering column tilts for perfect driver ergonomics.

Safe. Stable. Efficient.

Starke's new forklift provides features that deliver what's most important to you.



Speed limiter (optional)



Integrated heavy-duty overhead guard

The overhead guard is not a bolt-on afterthought...it's designed right into the chassis to provide optimal protection for your operators. As an integral part of the vehicle, it increases the overall strength of the chassis for rugged durability, especially in applications with uneven surfaces.



Mast lock system (optional)

This feature can automatically lock all lifting and tilting functions when the operator leaves the seat.



High mounted rear combination lights

The rear light clusters are mounted high for maximum visibility. Optionally, they can be mounted on top of the overhead guard for additional height.

Neutral safety start system

The electronic F/R lever has to be in the neutral (N) position before the engine can be started.



Tilt cylinder boots (optional)

Helps reduce cylinder rod scouring from dirt and grit which can lead to hydraulic leaks. Recommended for dirty and/or dusty applications.



Asbestos-free brake shoes

High-friction brakes use non-asbestos shoes.

Great performance

High performance, fuel efficient, low emission engines

Stärke forklifts use industry-standard engines that are engineered to be LOW EMISSION and LOW NOISE to protect your working environment. All diesel, gasoline and LPG engines are environmentally friendly with advanced combustion technology for reduced fuel consumption. All models are available with optional US EPA approved engines.

Stärke transmissions

The transmissions used in the MD series 1-5-3.5T single-speed and 4-5T two-speed F/R use advanced hydrodynamics for great precision and smoothness. The solenoid-controlled electronic F/R lever gives the operator fingertip directional control without taking their hands from the steering wheel.



Standard fork carriage (6 rollers)

All our mast assemblies use a 6-roller carriage for smooth operation even at full capacity. A 1,220mm high-load bracket is standard for increased load control and operator safety.



Hydraulic lift cylinder safety check valve

A check valve has now been added to the mast to control the drop speed, automatically avoiding crashes, damaged goods and excessive noise.



Power-Shift transmission

Each transmission is bench tested and provides easy disassembly for rebuilds. Each has 10 disks in clutch packs with 5 steel and 5 fibre composites.

- A 35 micron filter with check valve
- B 125 mesh shielded sump strainer
- C magnetic drain plug
- D solenoid control valve



Hydraulic steer axle

The Stärke rear axle delivers great maneuverability by allowing very high steer angles. It offers exceptional durability and lower maintenance (than traditional steering linkages)



Torque converter

Optimal visibility and ergonomics

Better visibility = greater safety and maximum productivity



Backward visibility



Forward visibility



Deluxe suspension seat (optional)

The Grammer suspension seat delivers the best in operator comfort, posture and performance. Ergonomically designed, it accommodates a wide range of operator weights with generous fore/aft, seat belt and seat angle adjustments.



New front cowl

Large foot space



Joystick hydraulic control (optional)

An optional joystick control is available for lifting/lowering the forks and tilting the mast. An armrest attached to the seat provides optimum ergonomics for safe, efficient operations.

The Stärke Professional Cushion Tire version shares much of the same engineering as our pneumatic tire models. With the same great looks, solid build and tight turning radius, it is simply the best lift truck for the money, maximizing production while minimizing worker fatigue in warehouse applications.

Easy maintenance



Non-bolt floorboard

Quick, tool-free access to the engine compartment below the floor boards saves time during regular servicing.



Insulated engine cover

The engine cover has a gas-filled cylinder with an automatic locking device to assist in opening and locking open the cover. Easy service access reduces maintenance time and expense. With the cover locked open, your technicians have easy access to all service points.

Engines



YANMAR 4TNE92 DIESEL ENGINE

Displacement : 2659 c.c.
Rated H.P. : 47.2ps/2450 rpm
Max torque : 14.7kg-m/1600 rpm



NISSAN K21 GASOLINE ENGINE

Displacement : 2065 c.c.
Rated H.P. : 42.4ps/2250 rpm
Max torque : 14.7kg-m/1600 rpm



GM 3.0L LPG ENGINE

Displacement : 2966.59 c.c.
Rated H.P. : 75ps/3000 rpm
Max torque : 20.3kg-m/1600 rpm

YANMAR 4TNE98 DIESEL ENGINE

Displacement : 3319 c.c.
Rated H.P. : 60ps/2450 rpm
Max torque : 18.2kg-m/1500 rpm

NISSAN K25 GASOLINE ENGINE

Displacement : 2488 c.c.
Rated H.P. : 50.9ps/2300 rpm
Max torque : 17.8kg-m/1600 rpm

Options



Swing-out LPG bracket



counterweight type



Dual wheel



Upward exhaust pipe



Upward exhaust pipe II



Rain guard



Super elastic tire



Pre-cleaner engine air intake



Climate controlled full cabin



Cabin



Side shift



Hinged fork



Rotating fork



Shovel



Bale clamp

* A full range of optional attachments are available.

