



## VersaHANDLER® Telescopic Tool Carriers



***One Tough Animal™***



# Bobcat VersaHANDLER TTC

The VersaHandler® Telescopic Tool Carrier combines the speed, agility and strength of a skid-steer with extended reach to handle a wide variety of attachments on any worksite. The VersaHandler TTC is the perfect machine for many jobs.

- Loading
- Digging
- Handling and placing material
- Grading
- Removing snow
- Sweeping

All four VersaHandler TTC models offer outstanding advantages:

- Hydrostatic transmission with shift-on-fly capability
- Side-mounted engine improves serviceability
- Single joystick allows multi-functionality of attachments
- Visibility over the boom when fully lowered
- 3 modes of steering provide maneuverability
- Quick coupler for attachment changes
- Simple to operate

Each VersaHandler model has its own unique advantages to match your specific job requirements. Whether you need the compact size of the V518, the rated load capacity of the V723, the lift height of the V638 or the unmatched attachment capabilities of the V417, the VersaHandler TTC works for you.

## Frame Level

The frame level feature allows the operator to level the machine on uneven ground for increased stability and greater efficiency. This feature is standard on the V723 and V638.

## Stabilizers

The stabilizer kit option, available on the V638 only, mounts radial stabilizer arms in the front of the machine that increase the stability and operating capacity throughout the lift cycle.





# The powerful telescopic tool carriers that get these tough jobs off the ground!



## Landscaping

Loading and transporting landscape materials, sod placement, grading, retaining walls, stockpiling.



## Construction

Grading, backfilling, truss placement, material handling, cleanup, excavating, light to medium construction.



## Agriculture

Handling bales, silage and fertilizer; defacing silage; loading trucks and tub grinders; pulling trailers; cleanup; feeding.



## Rental

Rent easy-to-use VersaHandler TTC as an attachment carrier, material handler or for loading.



## Municipalities

Mulching, waste transfer, leaf and tree cleanup, loading trucks and choppers, general maintenance, snow removal.



## Snow Removal

Pile snow higher and maximize as much room as possible in parking lots and driveways, alleys, warehouse lots, and farmyards.



## Industrial

Recycling (plastic, paper, metal), waste handling, loading trucks and containers, picking and placing material.



## Buildings and Grounds

Load, unload, transport and pile compost, dirt, mulch, rock, stone and trees in and around the facility.





# Features



## Controls

Single loader-style hydraulic joystick for boom and bucket functions. Boom extension and auxiliary functions activated by variable-control thumbwheels on joystick. Single shuttle lever for forward, reverse, high and low. Single lever for turn signals, horn and high-beam road lights. Tilt and telescoping steering wheel.



## Cab

Fully-enclosed cab with heat and air conditioning. More than 36 inches wide for operator comfort. Standard suspension seat. Opening rear window and left side window.



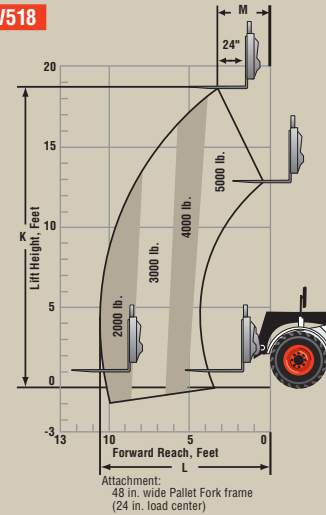
## Hydrostatic Transmission

Simple-to-use, heavy-duty industrial hydrostatic transmission. Great wheel torque for digging and pushing. Dynamic braking. Shift on the fly; smooth transition between low and high. Two speed ranges plus two operator preference modes along with inching capabilities.

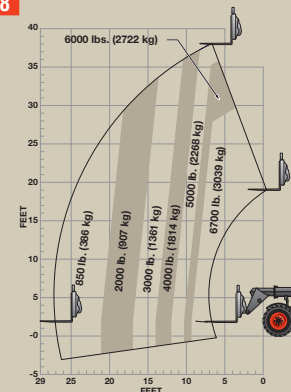


## Rated Loads\*

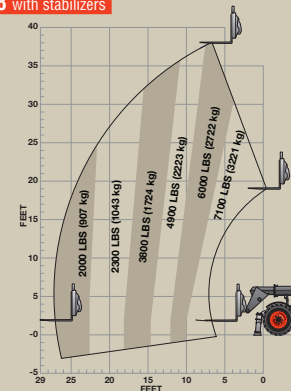
**V518**



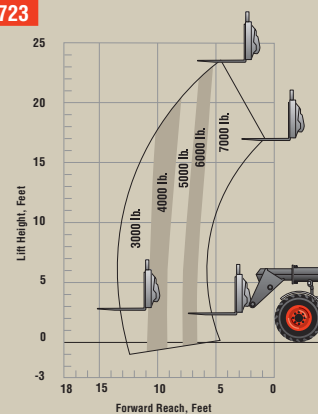
**V638**



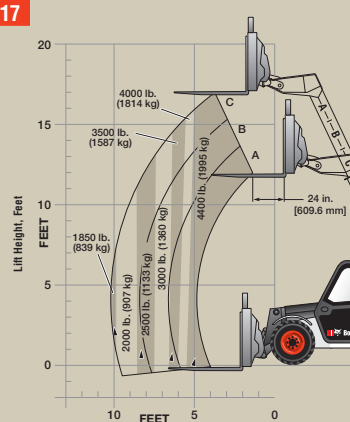
**V638 with stabilizers**



**V723**

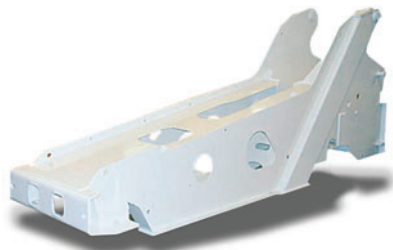


**V417**



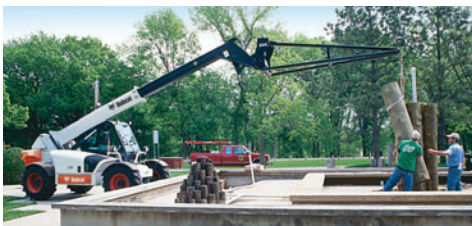
\*Rated Load Capacity can change depending on which approved attachment is used.

## Performance Features



### Frame

A light, rigid, unitized frame provides the strength to lift as much as heavier machines in its class.



### Extendable Boom

Two-section boom protects cylinders, hoses and lines. Optimal rear pivot position for superior digging ability and excellent reach at maximum lift height.



### Visibility

Low-mount boom gives all-around visibility. Standard left and right mirrors aid operators. Side-mounted engine allows better visibility to the side and rear of the machine, offers a low machine profile and convenient serviceability.



### Bob-Tach™

The Bob-Tach attachment mounting system comes standard on the V417. Eliminate hand labor on your toughest jobs with a wide variety of attachments.



### Transmission Work Mode

Mode switch allows operator to choose method of transmission operation: **Turn on** for applications requiring higher wheel torque, such as pushing, stockpiling or truck loading. **Turn off** for normal work conditions.



### Hydraulic Quick-Tach

For easy hookup and disconnect of attachments. The operator can even hook up non-hydraulic attachments without leaving the VersaHandler TTC cab. Hydraulic Quick-Tach gives you a time-saving edge on every jobsite.



### Training Resources

Training kits are available through your Bobcat dealer to assist you in complying with OSHA Rule 29 CFR 1910.178(l) for Powered Industrial Trucks. Check out [www.bobcat.com](http://www.bobcat.com) for more information on Bobcat Training Resources.

## Worldwide Support.

With the VersaHandler TTC you get more than an exceptional piece of compact equipment. You also get the support of a worldwide network of Bobcat® dealers offering industry-leading attachments, accessories and parts availability. Their factory-trained service technicians are equipped to handle all your parts and service requirements, including engine and hydrostatic/hydraulic components. There's an excellent warranty program, too. Get all the details from your Bobcat dealer.

## Three steering modes



**All-wheel steer** with tight turning



**Front-wheel steer** for road travel  
(18 mph top travel speed)



**Crab-steer** for positioning loads  
from side-to-side



## Specifications

### Performance

Operating Weight  
Max. Load Capacity  
Max. Load Full Height  
Max. Load at Full Reach

Auxiliary Hydraulic Flow  
Hydraulic Pressure  
Lift Height (K)  
Max Reach (L)  
Reach at Max Height (M) (24 in. Load Center)  
Bucket Dump Height (N)  
Reach at Dump Height (O)  
Bucket Dump Angle Full Height (P)  
Frame Level Angle  
Maximum Travel Speed  
Low  
High  
Draw Bar Pull  
Bucket Breakout Force

### V417

10648 lb. (4830 kg)  
4400 lb. (1995 kg)  
4400 lb. (1995 kg)  
1850 lb. (839 kg)  
22 gpm (85 L/min.)  
3626 psi (235 bar)  
206.0 in. (5230 mm)  
124.0 in. (3150 mm)  
47.0 in. (1193 mm)  
175.0 in. (4443 mm)  
31.0 in. (785 mm)  
47 degrees  
N/A  
4.3 mph (7 km/hr.)  
15.5 mph (25 km/hr.)  
6970 lbf. (31000 N)  
4721 lbf. (21000 N)

### V518

10846 lb. (4920 kg)  
5000 lb. (2268 kg)  
5000 lb. (2268 kg)  
2000 lb. (907 kg)  
21 gpm (79.5 L/min.)  
3626 psi (250 bar)  
217.7 in. (5530 mm)  
128.2 in. (3256 mm)  
42.0 in. (1067 mm)  
194.9 in. (4951 mm)  
31.9 in. (811 mm)  
26.8 degrees  
N/A  
4.7 mph (7.6 km/hr.)  
18.4 mph (29.6 km/hr.)  
8317 lbf. (36996 N)  
8093 lbf. (36000 N)

### V638

18275 lb. (8307 kg)  
6700 lb. (3045 kg)  
5000 lb. (2268 kg)  
850 lb. (386 kg)  
21 gpm (79.5 L/min.)  
3843.5 psi (265 bar)  
467.0 in. (11862 mm)  
323.0 in. (8204 mm)  
77.0 in. (1956 mm)  
434.0 in. (11023 mm)  
126.0 in. (3200 mm)  
38.6 degrees  
+/- 6 degrees  
4.7 mph (7.6 km/hr.)  
18.4 mph (30.1 km/hr.)  
10566 lbf. (36996 N)  
10341 lbf. (46000 N)

### V638 with stabilizers

19467 lb. (8830 kg)  
7100 lb. (3220 kg)  
6000 lb. (2721 kg)  
2000 lb. (907 kg)  
21 gpm (79.5 L/min.)  
3843.5 psi (265 bar)  
467.0 in. (11862 mm)  
323.0 in. (8204 mm)  
77.0 in. (1956 mm)  
434.0 in. (11023 mm)  
126.0 in. (3200 mm)  
42.6 degrees  
+/- 6 degrees  
4.7 mph (7.6 km/hr.)  
18.4 mph (30.1 km/hr.)  
10566 lbf. (36996 N)  
10341 lbf. (46000 N)

### V723

15827 lb. (7179 kg)  
7000 lb. (3175 kg)  
6600 lb. (2994 kg)  
3000 lb. (1361 kg)  
21 gpm (79.5 L/min.)  
3843.5 psi (265 bar)  
283.6 in. (7205 mm)  
156.5 in. (3975 mm)  
54.9 in. (1395 mm)  
248.9 in. (6322 mm)  
45.5 in. (1151 mm)  
38.6 degrees  
+/- 6 degrees  
4.7 mph (7.6 km/hr.)  
18.4 mph (30.1 km/hr.)  
10341 lbf. (46000 N)  
11885 lbf. (52870 N)

### Dimensions

Tires  
Length Fork Heel To Rear (A)  
Length Fork Heel To Rear Hitch (A1)  
Length Front Tire To Rear (B)  
Wheelbase (C)  
Ground Clearance (D)  
Cab Height (E)  
Width (F)  
Tread (G)  
Inside Turning Clearance (H)  
Wheel Turning Clearance (I)  
Fork Turning Clearance (J)  
Angle of Departure (Q)

Mitas 14-17.5, TR10  
156.8 in. (3984 mm)  
162.8 in. (4131 mm)  
122.2 in. (3103 mm)  
90.6 in. (2300 mm)  
11.6 in. (294 mm)  
78.1 in. (1985 mm)  
72.4 in. (1840 mm)  
58.5 in. (1485 mm)  
59.0 in. (1500 mm)  
124.8 in. (3170 mm)  
168.5 in. (4280 mm)  
40 degrees

400/70x20  
173.5 in. (4407 mm)  
178.5 in. (4554 mm)  
153.9 in. (3909 mm)  
98.4 in. (2499 mm)  
13.4 in. (340 mm)  
82.6 in. (2097 mm)  
78.1 in. (1984 mm)  
62.2 in. (1580 mm)  
58.0 in. (1473 mm)  
147.4 in. (3744 mm)  
184.8 in. (4694 mm)  
35 degrees

400/80 x 24  
214.9 in. (5459 mm)  
219.8 in. (5584 mm)  
168.7 in. (4284 mm)  
112 in. (2850 mm)  
20.2 in. (513 mm)  
93.4 in. (2372 mm)  
87.2 in. (2215 mm)  
71.3 in. (1812 mm)  
54.0 in. (1370 mm)  
153.5 in. (3900 mm)  
216.6 in. (5400 mm)  
40 degrees

400/80 x 24  
214.9 in. (5459 mm)  
219.8 in. (5584 mm)  
168.7 in. (4284 mm)  
112 in. (2850 mm)  
20.2 in. (513 mm)  
93.4 in. (2372 mm)  
87.2 in. (2215 mm)  
71.3 in. (1812 mm)  
54.0 in. (1370 mm)  
153.5 in. (3900 mm)  
212.6 in. (5400 mm)  
40 degrees

400/80x24  
195.6 in. (4969 mm)  
200.5 in. (5094 mm)  
163.0 in. (4143 mm)  
112.0 in. (2850 mm)  
20.2 in. (513 mm)  
93.4 in. (2372 mm)  
87.2 in. (2215 mm)  
70.8 in. (1798 mm)  
54.0 in. (1370 mm)  
153.5 in. (3900 mm)  
212.6 in. (5400 mm)  
40 degrees

### Engine

Make/Model  
Fuel/Cooling  
Cylinders  
Net Horsepower  
Rated rpm  
Torque @ 1400 rpm  
Torque @ 1600 rpm  
Displacement

V3800-DT-T Turbo Charged  
Diesel/Liquid  
4  
75 (56 kW)  
2400  
202.1 ft.-lb. (274 NM)  
N/A  
230 cu. in. (3.7 L)

1104C-44T Turbo Charged  
Diesel/Liquid  
4  
100 (74.5 kW)  
2200  
N/A  
304 ft.-lb. (412 NM)  
269 cu. in. (4.4 L)

1104C-44T Turbo Charged  
Diesel/Liquid  
4  
100 (74.5 kW)  
2200  
N/A  
304 ft.-lb. (412 NM)  
269 cu. in. (4.4 L)

1104C-44T Turbo Charged  
Diesel/Liquid  
4  
100 (74.5 kW)  
2200  
N/A  
304 ft.-lb. (412 NM)  
269 cu. in. (4.4 L)

1104C-44T Turbo Charged  
Diesel/Liquid  
4  
100 (74.5 kW)  
2200  
N/A  
304 ft.-lb. (412 NM)  
269 cu. in. (4.4 L)

Fuel Tank Capacity

24 gal. (91 L)

31.7 gal. (120 L)

38.3 gal. (145 L)

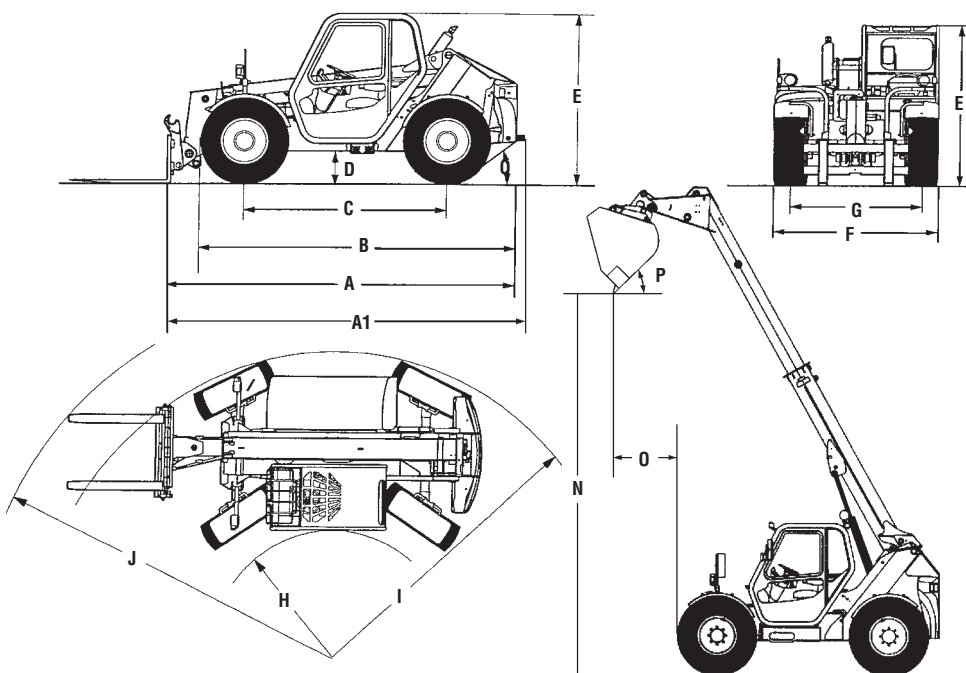
38.3 gal. (145 L)

38.3 gal. (145 L)

### Operation

Transmission  
Steering Modes

Hydrostatic, four-wheel drive  
Front wheel, four-wheel opposed, crab



NOTE — The VersaHANDLER TTC is a telescopic material handler which is a type of rough-terrain forklift truck. Where applicable, dimensions and specifications are in accordance with Society of Automotive Engineers (SAE), ASME B56.6 and ISO standards. Specifications and design are subject to change without notice. Pictures of Bobcat machines may show other than standard equipment. All dimensions are given for a machine equipped with standard tires. All dimensions are shown in inches. Respective metric dimensions are enclosed by parentheses. Bobcat Company complies with the requirements of ISO 9001 as registered with BSI.

## Bobcat Attachments for VersaHandler TTC

Angle Broom  
Auger  
Bale Handler  
Bale Squeezer  
Bob-Tach™ Adapter  
Buckets  
Brushcat® Rotary  
Cutter  
Dozer\*  
Grapple  
Landscape Rake  
Pallet Fork  
Root Grapple  
Scraper  
Seeder  
Snowblower\*  
Snow Pusher  
Snow V-Blade\*  
Soil Conditioner\*  
Sweeper  
Tiller  
Tilt Carriage  
Trencher  
Truss Boom

\* Requires Attachment Control Kit

